



TRADITIONS at Lovers Lane

VisionBuildersKY.com

Traditions Cottages

Patio Home Phase 1-B

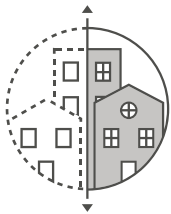
Bowling Green, Ky 42103

2 Bedroom, 2 Full Bath

Oversized 2-Car Garage

1st Floor- 1,496 square feet
Garage- 521square feet

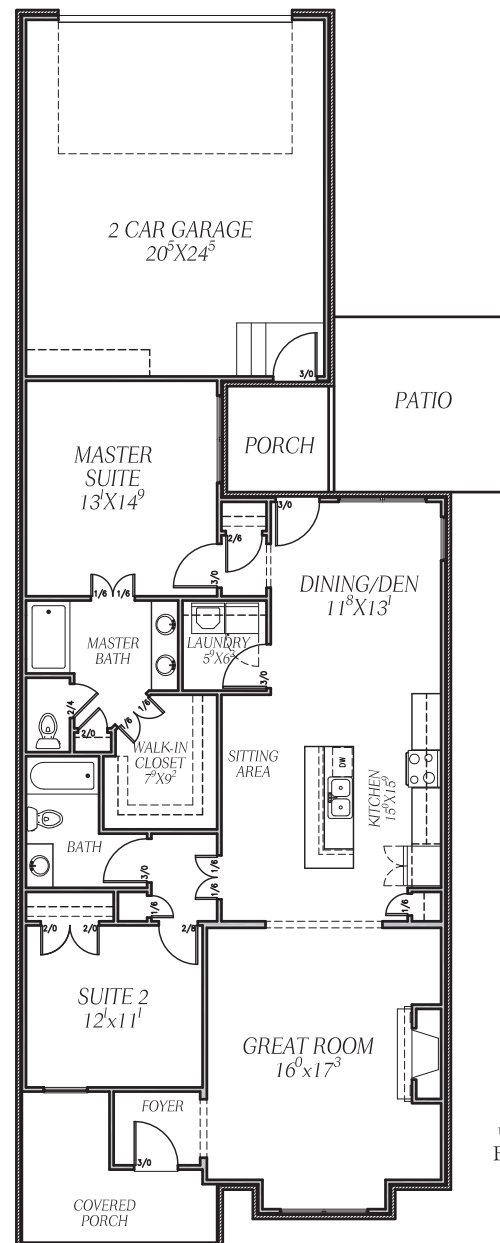
- Master Suite with Large Walk in Closet, Double Vanity, Walk-In Shower
- Dual Suites
- Spacious Living Room with Optional Fireplace
- Gourmet Eat-in Kitchen w/ Granite Countertops , Stainless Steel Appliances, and Sitting area
- Walk-in Laundry Room
- Formal Dining or Den
- Covered Porches
- Private Courtyard and Patio
- Community Amenities to include Pool, Parks and Community & Fitness Center
- Maintenance Free Living



VISION BUILDERS
concept to construction

Contact Us:
The Vision Group USA, LLC
P.O. Box 1717
Bowling Green, Ky 42101
Office (270) 846-2523
Fax (270) 846-2524
Email: info@traditionsatloverslane.com

Starting at:
\$274,900



Plan may reflect upgrades--contact Vision Builders for further details and pricing

It is said that humanity is incapable of building places as profound as what came before...Our Vision is different.

The above illustrations are conceptual design only and are subject to change without notification. Final design and price may vary at the builders discretion.