



TRADITIONS at Lovers Lane

VisionBuildersKY.com

313 Lafayette Ln.

Bowling Green, Ky 42103

Lot #33

4 bedroom, 3 full bath, 1 half bath,
bonus room and 3 car garage

Living Area- 2926 square feet

Garage - 854 square feet

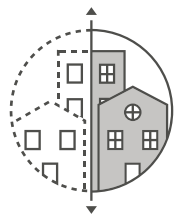
Porches - 393 square feet

- Tray ceilings in Master Suite with his & her walk in closets, private whirlpool bath and master study
- Custom tile walk-in shower
- Spacious Living Room with, optional plasma theatre, stone fireplace, vaulted ceiling
- Gourmet Kitchen w/ Custom Cabinets, Granite Tops, Stainless Steel Appliances, walk-in pantry and more.
- Covered Porch with optional outdoor kitchen
- Tech Center/Home Office w/ Custom Built-In Desk

The Lafayette



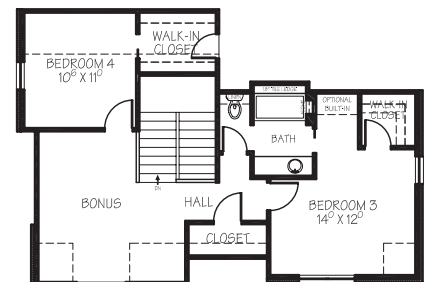
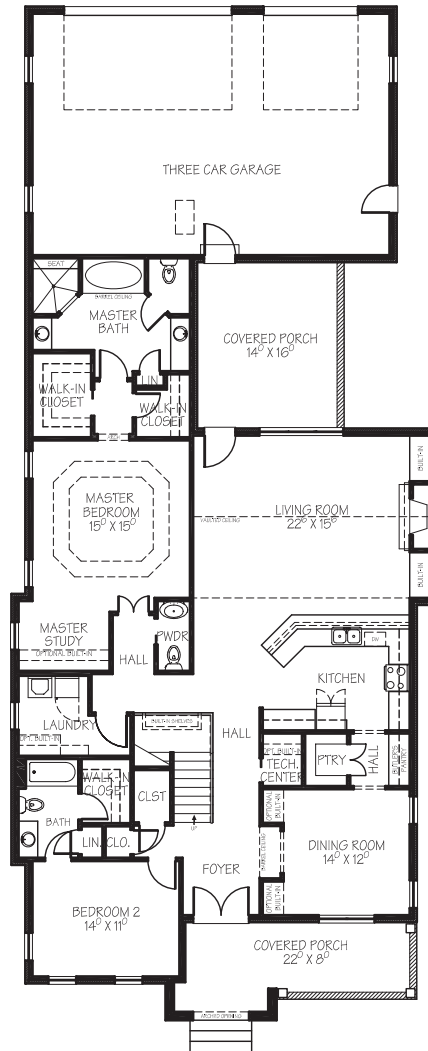
Home has exclusive park front setting, adjacent to one acre Lafayette Park.



VISION BUILDERS
concept to construction

Contact Us:
The Vision Group USA, LLC
P.O. Box 1717
Bowling Green, Ky 42101
Office (270) 846-2523
Fax (270) 846-2524
Email: info@traditionsatloverslane.com

www.TheVisionGroupUSA.com
www.TraditionsAtLoversLane.com



It is said that humanity is incapable of building places as profound as what came before...Our Vision is different.

The above illustrations are conceptual design only and are subject to change without notification. Final design and price may vary at the builders discretion.