



# TRADITIONS at Lovers Lane

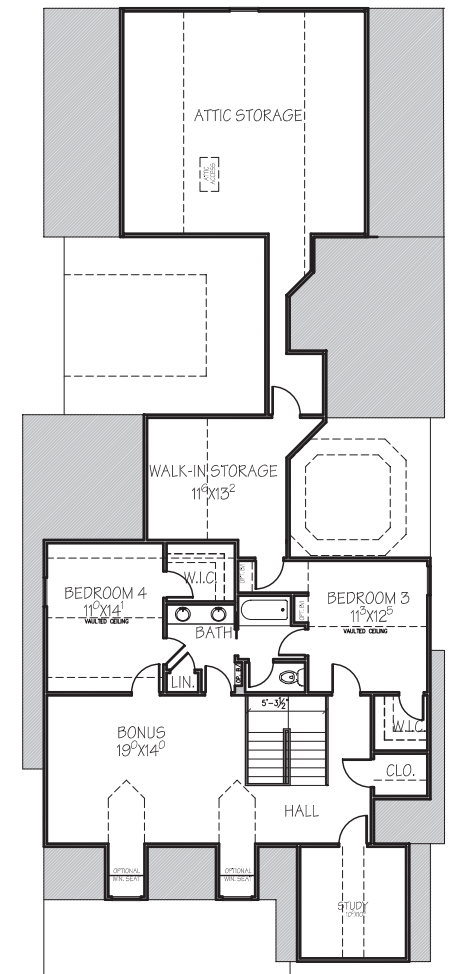
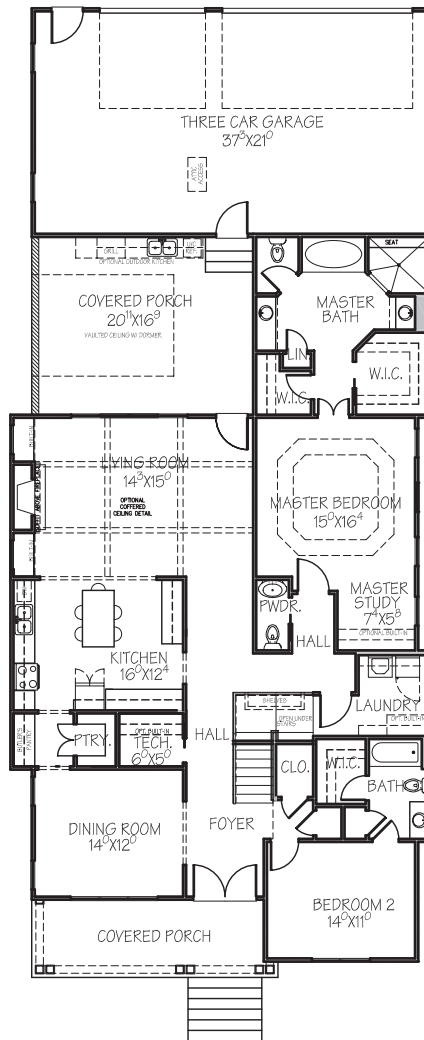
VisionBuildersKY.com

# The Clark



4 bedroom (2 on main level) ,  
3 full bath, 1 half bath,  
3 car garage, bonus room  
1st Floor- 2112 square feet  
2nd Floor -1158 square feet  
Garage- 816 square feet  
Porches - 514 square feet

- Master Suite with double tray ceiling, master study, his and her walk in closets, whirlpool bath, and Custom tile walk-in shower
- Spacious Living Room with optional coffered ceiling, fireplace and plasma theater ready
- Gourmet Kitchen w/ eat-in island bar, custom cabinets, granite tops, stainless steel appliances, and walk-in pantry
- Covered porch with optional outdoor kitchen and plasma theatre
- Tech Center/Home Office w/ Custom Built-In Desk and fiber optic ready



**VISION BUILDERS**  
concept to construction

Contact Us:  
The Vision Group USA, LLC  
P.O. Box 1717  
Bowling Green, Ky 42101  
Office (270) 846-2523  
Fax (270) 846-2524  
Email: info@traditionsatloverslane.com

www.TheVisionGroupUSA.com  
www.TraditionsAtLoversLane.com

It is said that humanity is incapable of building places as profound as what came before...Our Vision is different.

The above illustrations are conceptual design only and are subject to change without notification. Final design and price may vary at the builders discretion.